

Visions of steel

EUROTRAVI

WELDED BEAMS AND
ADDITIONAL PROCESSES



Words of steel

[the company and its method]

We are not willing to tell about us spending too many words, as essentiality is our core business, strength and precision are our method and history, that gets its roots from the pioneering spirit of nineteenth century's steel blacksmiths.

1989

the foundation year

38.000

the square meters over which the workshop is extended

12.800

the square meters of the covered area



20.000

the tonnes of annual production capacity

Local and global

the reference market

In the center of the net

the location in respect to road and railroad connections to North and East Europe, and to the major ports of the North Adriatic Sea

HSE and control

the state of mind on all working step

Advanced technologies

the imperative on each production phase

Training and updates

the requirements for the selection of operators and partners

[the set of our qualifications]

Our reliability on engineering, planning and production processes arises from expertise and professionalism.

The company is certified according the following standards.

UNI EN ISO 9001-2008

issued by Det Norske Veritas, DNV® (Quality Management)

UNI EN ISO 3834

part II, issued by Italian Welding Institute, IIS®

DIN 18800-7 class E

issued by Schweißtechnische Lehr und Versuchsanstalt, SLV®

**Centro di trasformazione accreditato
presso il Consiglio Superiore dei lavori Pubblici
ai sensi del D.M. 14.01.2008 n. 100/09**

(Steel processing center accredited by the Italian Board
of Governors of the Public works, according D.M. 14.01.2008,
registration no. 100/09)



Find us on quality





Welds like muscles

[products and fields of development]

Through the years technological investments and training developed the company production capacity, meeting the most daring demands of clients and designers in the manufacture of built-up welded members of any section, completed with applicable accessories and protective systems, ready for site erection.



Civil buildings

Industrial buildings

Road bridges

Railroad bridges

Ship buildings

Off-shore structures





ANTAGO 906

3GE21220

ANTAGO



We are able to perform the most challenging welds by the combined use of process SAW 121 (Submerged Arc Welding – Automatic) and semi-automatic gas-shielded methods. Welding processes qualified for ‘T’ full penetration junctions between webs and flanges with melted thickness up to 60 mm and butt welds up to 150 mm are able to guarantee, together with the contribution of operators qualified according standards EN/AWS/ASME, the absolute excellence of the products, conforming worldwide recognized standards.

Welds

Quality of base materials

A more than twenty years experience in the different fields of application let us achieve skills and capabilities in dealing with steel qualities according both the European and the American context.

- EN 10025 part II between S235 and S355
- EN 10025 part III between S420 and S460
- EN 10025 part V regarding all weathering steel qualities (Corten)
- EN 10225 for the off-shore field of application
- ASTM A516 g 70 and the related ones





[the laboratory and the testing]

Our internal laboratory is able to guarantee the technical tests on materials, whilst instruments calibration and applied technologies are periodically submitted to Third Party certification bodies which validate the relevant testing.

Tensile test

Bend test

Impact test

Macro test

Chemical Analysis

Hardness test



The strength of material

Trough thickness test

Magnetic particle inspection examination (MPI)

Ultrasonic examination (UT)

Radiographic examination (RX)

Dye penetrant examination (DP)

Protective systems' examinations

We are thereby able to provide the certificates of used materials validated by spectrometric-chemical analysis and destructive testings.

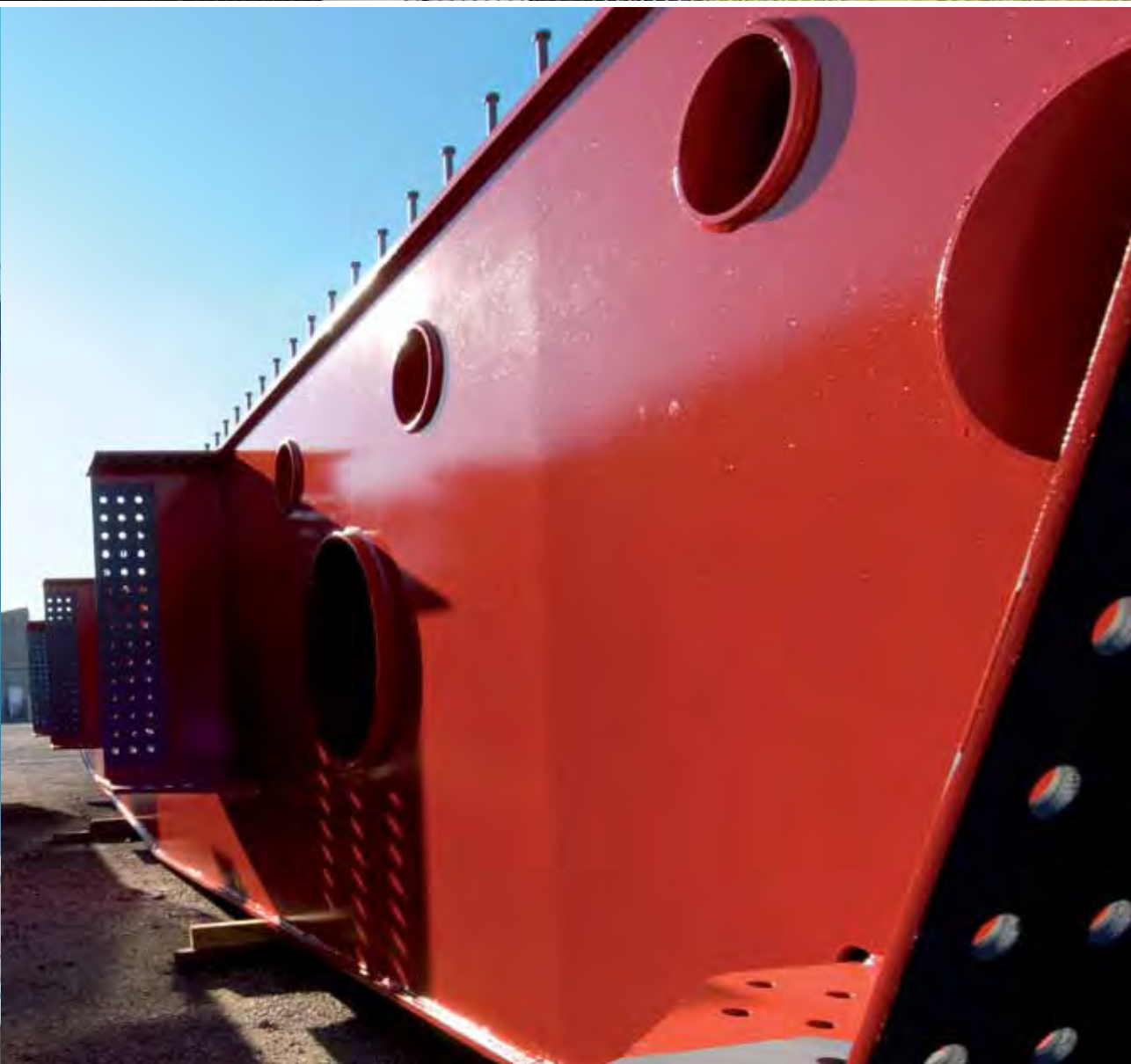
Eurotravi laboratory technicians who performs tests and controls are qualified according

Level II according standards UNI EN 473, e ASNT, CIC-PND e API RP2X

International Welding Engineer (IWE)

International Welding Tecnologist (IWT).







EUROTRAVI

S.r.l.

WELDED BEAMS AND
ADDITIONAL PROCESSES

31016 Cordignano (Tv) Italy

via del Lavoro, 12

phone no. +39.0438.995350

fax no. +39.0438.995250

ufftec@eurotravi.com

uffcom@eurotravi.com

www.eurotravi.com
